



# Chubbsafes

ELECTRONIC APARTMENT  
AND CONDOMINIUM SAFES

*Security designed to fit your lifestyle*



The Chubbsafes Electronic Apartment and Condominium Safes have been specially designed for use in homes with limited space to protect owners against the constant threat of petty theft. It offers the latest in electronic lock design with the following features :

• 6-digit code offering 1 million code changes.

• LED screen that displays clearly the functions being operated by the user.

• Battery level indicator.

• Operates using 4 numbers of 4 AA size batteries.

• 30 minutes Lock-out feature should there be 3 unauthorized attempts to open the safe.

• Usage of a 10 lever disc lock to access the safe if there is an accidental lockout or any battery failures.

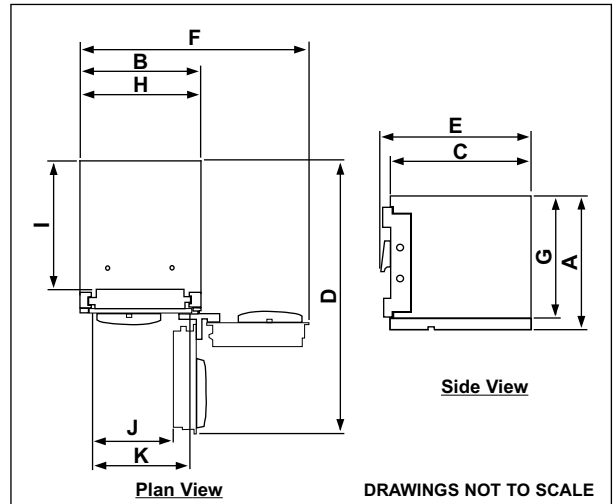
# Chubb safes Electronic Apartment and Condominium Safes Specifications

## Chubb safes Electronic Apartment Safe



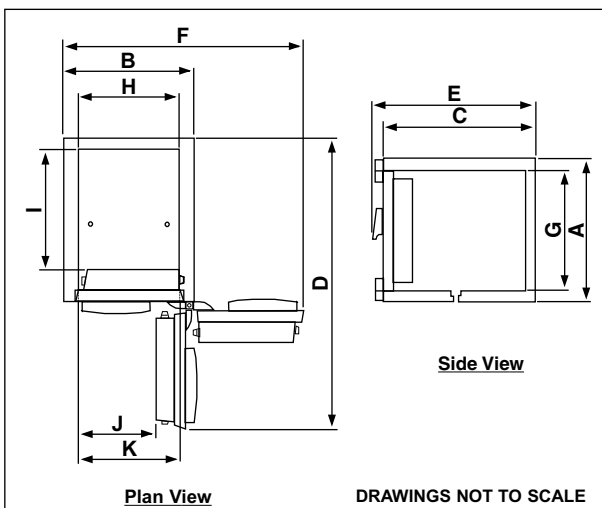
- **Body** : Has a thickness of 2mm.
- **Door** : Door plate of 6mm with an overall thickness of 61mm.
- **Locking** : The door is secured to the body of the safe by two 19mm in diameter steel moving bolts at the front end. A solid rebate secures the back edge of the door.
- **Finish** : An epoxy-based light grey paint.
- **Positioning** : The safe may be anchored to any stable base for additional security (optional).
- **Power source** : 4 units of batteries (AA size) are supplied as standard.

Safe Description	Model 350	Model 410
<b>Reference and Dimensions</b>		
<b>External Dimensions</b>	mm	mm
<b>A</b> Height	350	410
<b>B</b> Width	345	345
<b>C</b> Depth	400	400
<b>D</b> Overall depth with door at 90°	715	715
<b>E</b> Clear external depth over furniture	430	430
<b>F</b> Overall width with door at 180°	630	630
<b>Internal Dimensions</b>		
<b>G</b> Height	320	380
<b>H</b> Width	341	341
<b>I</b> Depth	330	330
<b>J</b> Clear Opening at 90°	220	220
<b>K</b> Clear Opening at 180°	270	270
<b>Shipping Particulars</b>		
Weight nett	24kg	26kg
Case m <sup>3</sup> (packed 4/pallet)	0.55m <sup>3</sup>	0.61m <sup>3</sup>
Weight gross (packed 4/pallet)	151kg	164kg



## Chubb safes Electronic Condominium Safe

- ¥ **Body** : Has an overall thickness of 29mm and comprises an inner and outer plate of tough steel.
- ¥ **Door** : Has an overall thickness of 79mm.
- ¥ **Locking** : The door is secured to the body of the safe by two 19mm in diameter steel moving bolts at the front end. Two other 19mm in diameter deadbolts secure the back edge of the door.
- ¥ **Finish** : An epoxy-based light grey paint.
- ¥ **Positioning** : The safe may be anchored to any stable base for additional security (optional).
- ¥ **Power source** : 4 units of batteries (AA size) are supplied as standard.



Safe Description	Model 350	Model 410
<b>Reference and Dimensions</b>		
<b>External Dimensions</b>	mm	mm
<b>A</b> Height	350	410
<b>B</b> Width	345	345
<b>C</b> Depth	400	400
<b>D</b> Overall depth with door at 90°	715	715
<b>E</b> Clear external depth over furniture	430	430
<b>F</b> Overall width with door at 180°	630	630
<b>Internal Dimensions</b>		
<b>G</b> Height	290	350
<b>H</b> Width	265	265
<b>I</b> Depth	280	280
<b>J</b> Clear Opening at 90°	185	185
<b>K</b> Clear Opening at 180°	267	267
<b>Shipping Particulars</b>		
Weight nett	65kg	68kg
Case m <sup>3</sup> (packed 4/pallet)	0.55m <sup>3</sup>	0.61m <sup>3</sup>
Weight gross (packed 4/pallet)	315kg	332kg

Note : Chubb safes policy is one of constant improvement. We reserve the right to alter any specification contained in this publication without prior notification. Variance ± 5mm.

## Chubb safes

Chubb Malaysia Sdn Bhd (Company No. 7652-K)  
 Kompleks Sime Darby, Persiaran Kewajipan, USJ 7,  
 47600 UEP Subang Jaya, Selangor Darul Ehsan, Malaysia.  
 Tel : 03-5635 3050 ¥ Fax : 03-5635 3066  
 Website : www.chubbmalaysia.com

Chubb is owned by Chubb plc and is a registered trademark used under Licence .



SIRIM  
 MS ISO 9002  
 Registration No : AR 0238

A member of the  Sime Darby Group

Distributor/Dealer Details