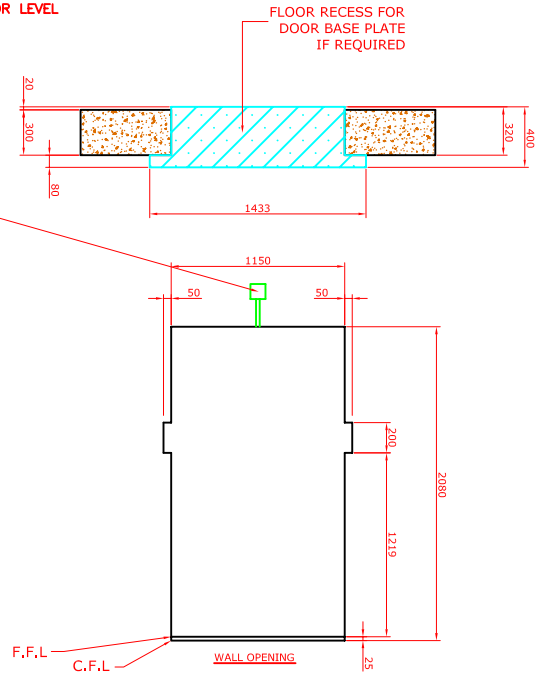
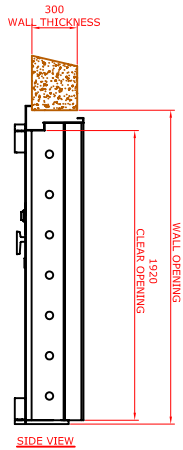
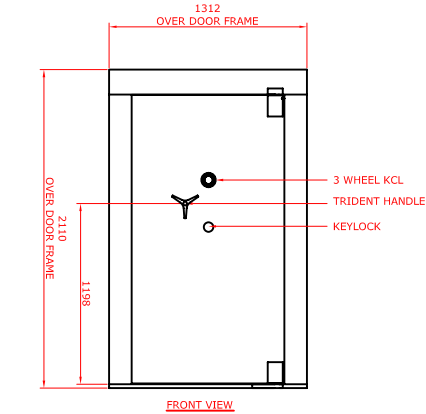
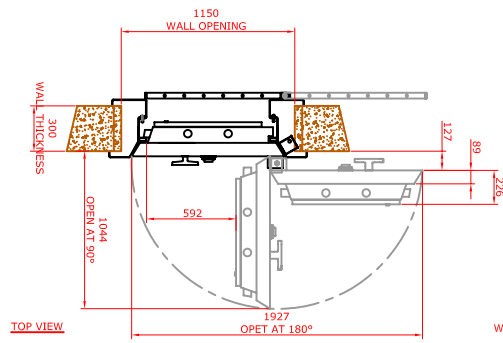


3½" Strongroom Door Range



	Standard	Premium
Clear Opening	1920mm(H) x 814mm(W)	
Over Frame	2110mm(H) x 1312mm(W)	
Door Thickness	226mm	
Protective Thickness	89mm	
Barrier Material	F80 - Steel Fiber Reinforced Concrete	
Front Bolts	7 moving Front Bolts (Diameter 50mm)	
Top / Bottom Bolts	2 top & 2 bottom moving Bolts (Diameter 50mm)	
Rear Bolts	Full Height Fixed Rear Docking Bolt	7 Fixed Rear Bolts (Diameter 50mm)
Locking: KCL	3-Wheel S&G Keyless Combination Lock	
Locking: KL	Mauer 71113 Key Lock-164mm Key (Non Detachable)	Mauer 70079 Key Lock-235mm Key (Detachable)
Relockers	2 Glass Relocker, protected by TDR blocks operated from a single glass located at the KCL mount plate. KL protected by TDR block	2 Glass Relocker, protected by TDR Blocks operated from a single large glass covering the whole locking area
Hinge	Heavy Duty Bearing Hinges - Left / Right hung	
Base Frame	25mm Solid Base Plate	
Back Panel	Fixed with Change Key hole and cover	With Hinges & secured by 2 x L&F Cam Lock
Ventilator System	Not Available	Included as standard c/w wiring
Micro Switch	2 x Micro Switch c/w wiring	
Handle	Trident Handle	Wheel Handle
Finish	Painted Finish (Grey primer)	
Stainless Steel Cladding	Optional	
Grille Gate	Optional (Painted or Stainless Steel Finish)	
Grille Gate Locking	2 x Union 2101 (5 lever Dead Bolt Lock)	
Net Weight	720Kg Door and 40Kg Gate	740Kg Door and 40Kg Gate
Standard Wall Thickness	300mm	
Shipping	12 units of Doors + Gate in one 20 foot Container	

WALL OPENING DETAIL

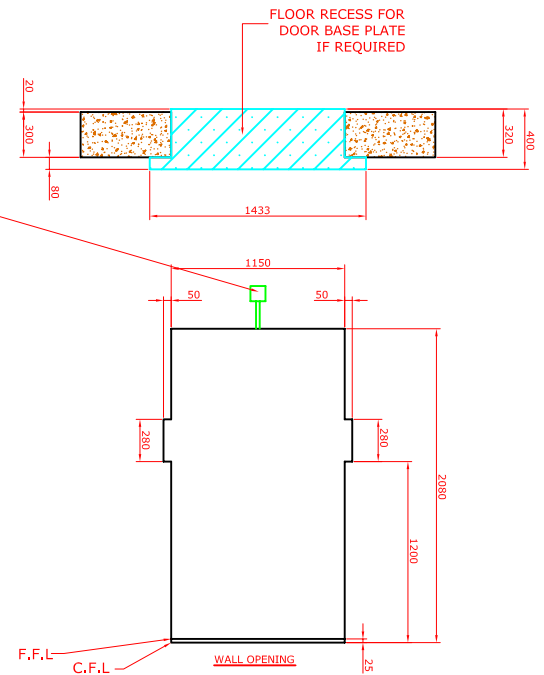
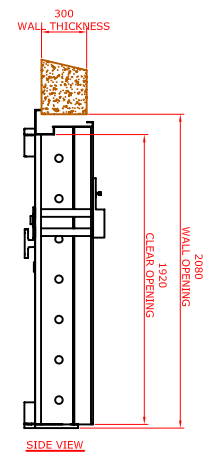
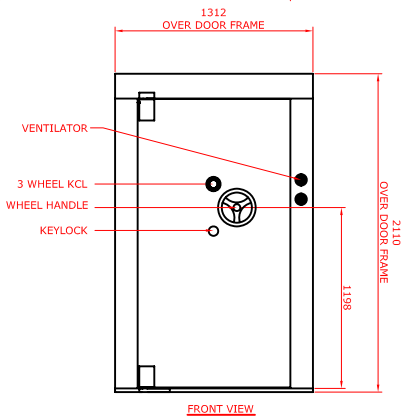
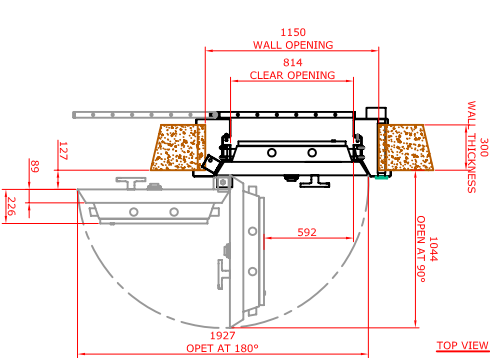


NOTE :
 RECOMMENDED MINIMUM WALL THICKNESS : 300 MM IN REINFORCED CONCRETE(R.C)
 F.F.L = FINISH FLOOR LEVEL
 C.F.L = CONCRETE FLOOR LEVEL

JUNCTION BOX (MINIMUM 38mm PREPARED ABOVE THE WALL OPENING ON THE INNER SIDE OF THE ROOM. (NOTE: JUNCTION BOX IS NOT SUPPLIED WITH THE DOOR AND IS TO BE INSTALLED BY OTHERS))

FLOOR RECESS FOR DOOR BASE PLATE IF REQUIRED

3.1/2" STRONG ROOM DOOR (STANDARD)



NOTE :
 RECOMMENDED MINIMUM WALL THICKNESS : 300 MM IN REINFORCED CONCRETE(R.C)
 F.F.L = FINISH FLOOR LEVEL
 C.F.L = CONCRETE FLOOR LEVEL

JUNCTION BOX (MINIMUM 38mm PREPARED ABOVE THE WALL OPENING ON THE INNER SIDE OF THE ROOM. (NOTE: JUNCTION BOX IS NOT SUPPLIED WITH THE DOOR AND IS TO BE INSTALLED BY OTHERS))

FLOOR RECESS FOR DOOR BASE PLATE IF REQUIRED

3.1/2" STRONG ROOM DOOR (PREMIUM)